

ABBY AIR LLC

411 W SPRUCE ST, ABBOTSFORD WI. 54405-0485 715 223 4131 ABBYAIR.COM 1-23-13JL

HIGH STRENGTH TUBE SADDLES AND TUBE CONNECTORS

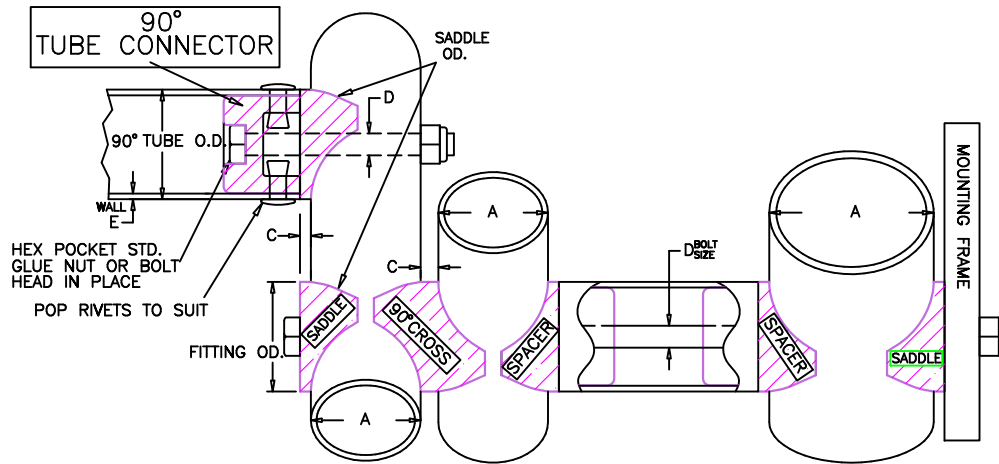
For bolting round tubes to flat surfaces or connecting round tubes 90° to round tubes.

These saddles and connectors provide very robust connections with excellent cosmetics. The fiberglass reinforced nylon won't crack or split and provides excellent thermal, chemical and moisture stability. Tube connectors have molded in hex pockets for bolt heads and nuts. All parts are molded to clamp tightly to the sides of the tubes to prevent snag points. Fiberglass filled nylon tube saddles and connectors are suitable for anything made of tubing.

- Ultralight Air Planes -Boats: Dodgers, Biminis, Awnings, Railings, etc.
- Trade Show -- Booth Fabrication -Stage Lighting -Exercise Equipment
- Medical -- Carts, Beds, IV Stands, etc. -Furniture -- Chairs, Tables, Book Shelves

Also referred to as tube supports, pipe supports, tube clamps, frame fittings, pipe saddles. This material provides excellent tensile, yield, impact strength, and high dynamic load capacity.

	Fiberglass Reinforced Nylon	vs.	Nylon 6 Unreinforced
Tensile	30500 psi		7250 psi
Yield	50800 psi		16700 psi
Impact	3.2 Ft/lb/in.		1.1 Ft/lb/in.



SORTED BY

PART#	TYPE	90° TUBE O.D.	SADDLE O.D.	FITTING O.D.	OFFSET	BOLT SIZE	WALL THICKNESS	LIST PRICE		
								100PCS.	500PCS.	1000PCS.
6205	SADDLE	NA	1.000	1.000	.125	1/4	NA	\$.76 EA.	\$.68 EA.	\$.66 EA.
6215	SADDLE	NA	1.000	1.000	.250	1/4	NA	.76 EA.	.68 EA.	.66 EA.
6226	SADDLE	NA	1.000	1.000	.125	5/16	NA	.78 EA.	.70 EA.	.68 EA.
6206	SADDLE	NA	1.250	1.250	.190	1/4	NA	.78 EA.	.70 EA.	.68 EA.
6204	SADDLE	NA	1.500	1.000	.190	1/4	NA	.76 EA.	.68 EA.	.66 EA.
6225	SADDLE	NA	1.500	1.000	.125	1/4	NA	.76 EA.	.68 EA.	.66 EA.
6203	SADDLE	NA	1.500	1.350	.190	1/4	NA	.78 EA.	.70 EA.	.68 EA.
6217	SADDLE	NA	1.625	1.000	.125	1/4	NA	.78 EA.	.70 EA.	.68 EA.
6202	SADDLE	NA	1.625	1.350	.190	1/4	NA	.78 EA.	.70 EA.	.68 EA.
6212	SADDLE	NA	2.000	1.350	.157	5/16	NA	.78 EA.	.70 EA.	.68 EA.
6209	90° CONNECTOR	1.000	1.000	1.000	.125	1/4	.050/.065	2.65 EA.	2.22 EA.	2.13 EA.
6207	90° CONNECTOR	1.250	1.250	1.250	.125	1/4	.050/.065	2.65 EA.	2.22 EA.	2.13 EA.
6214	90° CONNECTOR	1.250	1.250	1.250	.125	3/16	.050/.065	2.65 EA.	2.22 EA.	2.13 EA.
6223	90° CONNECTOR	1.000	1.500	1.000	.125	1/4	.050/.065	2.65 EA.	2.22 EA.	2.13 EA.
6211	90° CROSS	NA	1.000	1.000	.190	1/4	NA	1.40 EA.	1.34 EA.	1.31 EA.
6216	90° SPACER	1.000	1.000	1.000	.125	5/16	.050/.065	2.36 EA.	1.96 EA.	1.83 EA.
6222	90° SPACER	1.000	1.500	1.000	.125	5/16	.050/.065	2.36 EA.	1.96 EA.	1.83 EA.
6231	90° CONNECTOR	1.500	1.500	1.500	.125	5/16	.050	2.86 EA.	2.16 EA.	2.03 EA.